

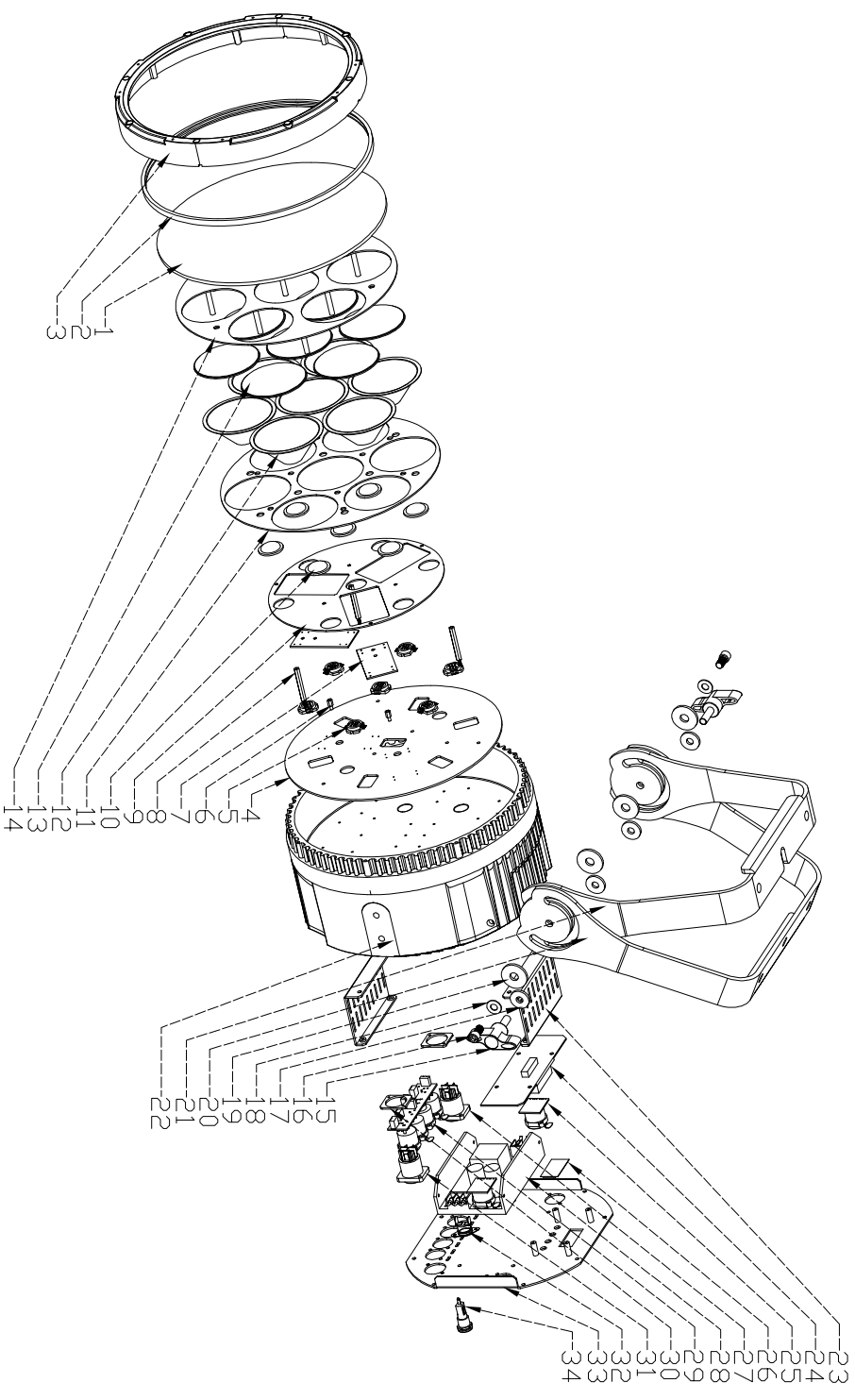
版本:00

区域 修改内容

公差等级(未注) GB/T1804—2000 F级

发布日期 2014-06-26

SN	DRAWI NO.	ITEM NO.	QTY	REMARK
1	LA3141-07	toughened glass	1	
2	LA3141-08	waterproof silicone rope	1	
3	LA3141-02	front cover	1	
4	LA3146-03E	LBD PCB	1	
5	LA3155-01	LBD	7	
6	LA3155-01	copper pillar 1 (short)	2	
7	LA3146-01C	driver PCB	3	
8	LA-WG-114	copper pillar:M3*4+6	2	
9	LA3146-02	pressing plate	1	
10	LA3400B-01	automation mirror	7	
11	LA3146-04	pressing plate for Fresnel lens	1	
12	LA3400B-02	reflection cup	7	
13	LA2108D-01	Fresnel lens	7	
14	LA3146-03	panel	1	
15	LA3155-28A-03	"S" knob (M8×25)	2	
16	LA-WG-039	M8×30 inner hexagon screw	2	
17	LA-WG-012	φ22×φ8×3 rubber washer	4	
18	LA-WG-011	φ17×φ8×1 Flat washer	2	
19	LA-WG-003	φ30×φ10×3 rubber washer	4	
20	LA3160-28A-03	bracket B	1	
21	LA3160-28A-02	bracket A	1	
22	LA3146-01	light housing	1	
23	LA3141-03	fixing plate for part	2	
24	LA3146-02B	display PCB	1	
25	LAR145-03A	R145 connection plug	2	
26	LA1114-12	PC for display	1	
27	LA-WG-006	powercon out	1	
28	K18-UP400S12	power supply	1	
29	LADMW-08A	3P-5P MR sockets with PCB (in/out)	1	
30	LA3401-10	pressing plate	2	
31	LA-WG-008	powercon in	1	
32	LA-WG-113	temp. control switch	1	
33	LA3146-06	back cover B	1	
34	LA-WG-007	fuse holder	1	
35				
36				
37				
38				



名称	折弯	折弯角	喷漆厚度	范围(mm)	公差
尺寸范围(mm)	0-50	50-300	>15°	单边0.08 双边0.12	±0.1 ±0.25 ±1
未注公差(mm)	±0.1	±0.25	±1°	0.02	±0.5 ±1 ±1.5 ±2.5 ±4 ±6 ±8

广州鹏林照明灯具有限公司								
制图	黄俊杰	2014-06-26	图号	LA3146-BZ-00	数量:	1	材料:	组件
核对			名称	产品爆炸图	涂复:		比例:	1:1/CAD
审核			电脑	LA3146-BZ-00	版	本		00
批准			文件	LA3146-BZ-00	第 1 页 / 共 1 页			